

State of Wyoming Corner Record

(in compliance with the CORNER PERPETUATION AND FILING ACT, Wyoming Statutes, 1977, Section 36-11-101, et. seq., and the Rules and Regulations of the Board of Registration for Professional Engineers and Professional Land Surveyors)

Reverse side of this form may be used if more space is needed.

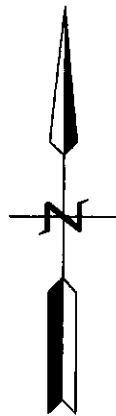
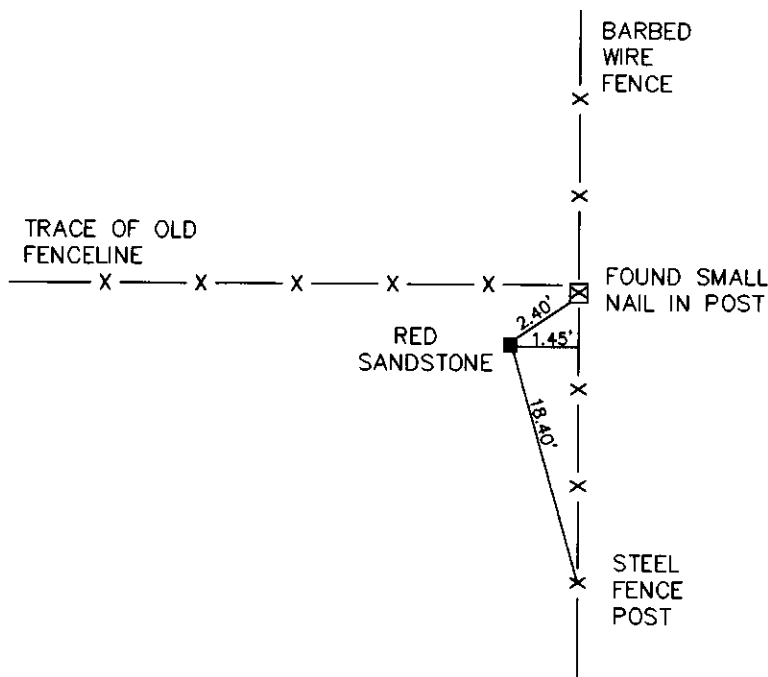
Record of original survey and citation of source of historical information (if corner is lost or obliterated). Description of corner monumentation evidence found and/or monument and accessories established to perpetuate the location of this corner. Sketch of relative location of monument, accessories, and reference points with course and distance to adjacent corner(s) (if determined in this survey). Method and rationale for reestablishment of lost or obliterated corner.

GLO RECORD: SET A RED SANDSTONE 18" X 14" X 6" 10" DEEP WITH FOUR NOTCHES ON SOUTH FACE AND TWO NOTCHES ON EAST SIDE.

MONUMENT FOUND: FOUND RED SANDSTONE 9" X 9" X 4" OUT OF THE GROUND WITH FOUR NOTCHES ON SOUTH ON SOUTH FACE AND TWO NOTCHES ON EAST SIDE SURROUNDED BY STONES, REBUILT MOUND OF STONES AROUND CORNER.

MONUMENT SET: NOTHING

REFERENCES: REFERENCES SHOWN BELOW.



197541
LARAMIE COUNTY CLERK
CHEYENNE, WY.
197 FEB 7 AM 8 38

Date of Field Work: 5-20-96 Office Reference: 96130

CROSS INDEX DIAGRAM

Firm/Agency, Address

STEIL SURVEYING SERVICES, LLC
1102 WEST 19th STREET
CHEYENNE WY 82001

This corner record was prepared by me or under my direction and supervision.
SEAL & SIGNATURE

Telephone Number: (307) 634-7273

A	1	2	3	4	5	6	7	8	9	10	11	12	13	14	15	16	17	18	19	20	21	22	23	24	25
B																									
C	6		5																						
D																									
E																									
F																									
G	7		8																						
H																									
J																									
K																									
L	18		17																						
M																									
N																									
O																									
P	19		20																						
Q																									
R																									
S																									
T	30		29																						
U																									
V																									
W																									
X	31		32																						
Y																									
Z	1	2	3	4	5	6	7	8	9	10	11	12	13	14	15	16	17	18	19	20	21	22	23	24	25



BOOK 1443

Corner Name: NW SECTION CORNER Section: 14 T 12N R 70W; 6th P.M. Cross-Index No.: J-17

SBRPEPLS/PLSW: March 1994

0952